

## Submittal Information

Part No 12701-12736  
 Document No. SPEC12701  
 Date 2020-04-16  
 Revision 02

## General Properties

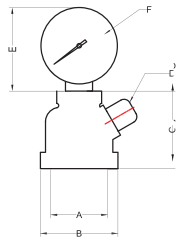
Material: Gauge: Steel, Brass  
 Body: Steel  
 Dial size: 2"  
 Window : Clear plastic  
 Dial plate : Aluminum, with pointer stop  
 Pointer : Aluminum, black  
 Connection : Brass  
 Accuracy : +/- 1%  
 Pressure range : 0-15psi, 0-30psi, 0-60psi, 0-100psi

## BLACK FITTING AIR TEST GAUGES

### Specification



Part NO.	A Pipe size	B	C	D Connector	E	F	Specifications	U/M	Std.Pkg.
12701	1/2" NPT	1.2"	1.4"	1/16" NPT	2.4"	2"	15 PSI	EA	50
12702	3/4" NPT	1.5"	1.5"	1/16" NPT	2.4"	2"	15 PSI	EA	50
12703	1" NPT	1.8"	1.7"	1/16" NPT	2.4"	2"	15 PSI	EA	50
12704	1/2" NPT	1.2"	1.4"	1/16" NPT	2.4"	2"	60 PSI	EA	50
12705	3/4" NPT	1.5"	1.5"	1/16" NPT	2.4"	2"	60 PSI	EA	50
12706	1" NPT	1.8"	1.7"	1/16" NPT	2.4"	2"	60 PSI	EA	50
12707	1/2" NPT	1.2"	1.4"	1/16" NPT	2.4"	2"	30 PSI	EA	50
12708	3/4" NPT	1.5"	1.5"	1/16" NPT	2.4"	2"	30 PSI	EA	50
12709	1" NPT	1.8"	1.7"	1/16" NPT	2.4"	2"	30 PSI	EA	50
12710	1/2" NPT	1.2"	1.4"	1/16" NPT	2.4"	2"	100 PSI	EA	50
12711	3/4" NPT	1.5"	1.5"	1/16" NPT	2.4"	2"	100 PSI	EA	50
12712	1" NPT	1.8"	1.7"	1/16" NPT	2.4"	2"	100 PSI	EA	50

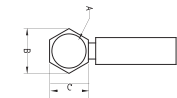
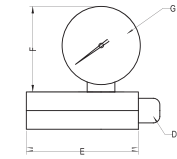


### Features

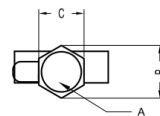
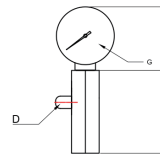
- Easy-to-read gauge with clear facing
- Durable construction for performance reliability
- Black iron threaded bell for leak tight connection
- All gauges are 2-inch diameter face
- Test air pressure
- Easy to install, no tools are required

## HEX BODY AIR TEST GAUGES

### Specification



Part NO.	A Pipe size	B	C	D Connector	E	F	G	Specifications	U/M	Std.Pkg.
12713	1/2" NPT	1.0"	0.9"	1/16" NPT	2"	2.4"	2"	15 PSI	EA	50
12714	3/4" NPT	1.25"	1.1"	1/16" NPT	2"	2.4"	2"	15 PSI	EA	50
12715	1" NPT	1.6"	1.4"	1/16" NPT	2"	2.4"	2"	15 PSI	EA	50
12716	1/2" NPT	1.0"	0.9"	1/16" NPT	2"	2.4"	2"	60 PSI	EA	50
12717	3/4" NPT	1.25"	1.1"	1/16" NPT	2"	2.4"	2"	60 PSI	EA	50
12718	1" NPT	1.6"	1.4"	1/16" NPT	2"	2.4"	2"	60 PSI	EA	50
12719	1/2" NPT	1.0"	0.9"	1/16" NPT	2"	2.4"	2"	30 PSI	EA	50
12720	3/4" NPT	1.25"	1.1"	1/16" NPT	2"	2.4"	2"	30 PSI	EA	50
12721	1" NPT	1.6"	1.4"	1/16" NPT	2"	2.4"	2"	30 PSI	EA	50
12722	1/2" NPT	1.0"	0.9"	1/16" NPT	2"	2.4"	2"	100 PSI	EA	50
12723	3/4" NPT	1.25"	1.1"	1/16" NPT	2"	2.4"	2"	100 PSI	EA	50
12724	1" NPT	1.6"	1.4"	1/16" NPT	2"	2.4"	2"	100 PSI	EA	50



Part NO.	A Pipe size	B	C	D Connector	E	F	G	Specifications	U/M	Std.Pkg.
12725	1/2" NPT	1.0"	0.9"	1/16" NPT	2"	2.4"	2"	15 PSI	EA	50
12726	1/2" NPT	1.0"	0.9"	1/16" NPT	2"	2.4"	2"	30 PSI	EA	50
12727	1/2" NPT	1.0"	0.9"	1/16" NPT	2"	2.4"	2"	60 PSI	EA	50
12728	1/2" NPT	1.0"	0.9"	1/16" NPT	2"	2.4"	2"	100 PSI	EA	50
12729	3/4" NPT	1.25"	1.1"	1/16" NPT	2"	2.4"	2"	15 PSI	EA	50
12730	3/4" NPT	1.25"	1.1"	1/16" NPT	2"	2.4"	2"	30 PSI	EA	50
12731	3/4" NPT	1.25"	1.1"	1/16" NPT	2"	2.4"	2"	60 PSI	EA	50
12732	3/4" NPT	1.25"	1.1"	1/16" NPT	2"	2.4"	2"	100 PSI	EA	50
12733	1" NPT	1.6"	1.4"	1/16" NPT	2"	2.4"	2"	15 PSI	EA	50
12734	1" NPT	1.6"	1.4"	1/16" NPT	2"	2.4"	2"	30 PSI	EA	50
12735	1" NPT	1.6"	1.4"	1/16" NPT	2"	2.4"	2"	60 PSI	EA	50
12736	1" NPT	1.6"	1.4"	1/16" NPT	2"	2.4"	2"	100 PSI	EA	50

### Features

- Easy-to-read gauge with clear facing, accurate scale.
- Test air pressure and easy to install and convenient to use.
- Durable construction for performance reliability that a great pressure measuring tool with stable performance.
- Colored galvanized iron threaded bell for leak tight connection.
- Shell of the pressure meter can protect internal accessories well.