

**DSMN005**

# **MINI-SPLIT SYSTEM**

## **Parts Essentials Catalog**

## MINI SPLIT A/C PUMP STANDS

- Durable steel construction with weather-resistant coating.
- Anti-vibration Units for noise reduction and stability.
- Anti-corrosion properties for rust and moisture protection.
- Adjustable design to fit various A/C unit sizes, with built-in measuring.
- Heavy-duty support for up to 500 pounds, universal fit for major mini-split A/C brands.

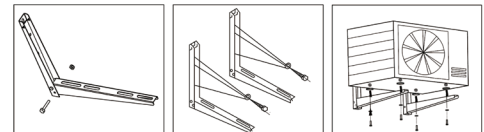
Item No.	Specifications	U/M	Std. Pkg.
18701	Mini Split Pump Stand, W35 1/2" x D18" x H12"	KT	4
18702	Mini Split Pump Stand, W35 1/2" x D22" x H12"	KT	4
18703	Mini Split Pump Stand, W35 1/2" x D18" x H18"	KT	4
18704	Mini Split Pump Stand, W35 1/2" x D22" x H18"	KT	4



## MINI SPLIT MOUNTING BRACKETS

- Heavy duty steel construction galvanized and electrostatic paints for resistance scratch and corrosion. Galvanized steel plus epoxy-coated finishing, allowing the bracket to endure all climate condition.
- Heavy duty design with L-bracket and horizontal coated with fold-able design. Includes all necessary hardware.
- Use for loading split type air conditioner of outdoor unit. Raises the outdoor unit above floor level protecting it from dirt, snow, debris, flood, corrosion and other perils.
- Easy 2-ways mounting-hard-wares included for your convenience, vibration isolation pads are provided for noise and vibration control purpose.
- Minimizes the chance of damage to the window or outside wall.

Item No.	Specifications	U/M	Std. Pkg.
18023	16-1/2" x 21-3/4" Bracket (3 HP)	PR	10



## MINI SPLIT MOUNTING BRACKETS

- Heavy duty design with L-bracket and horizontal. Accurate construction-advanced technical to ensure brackets are perpendicular to each other when condenser leveling.
- Heavy duty bracket-constructed with heavy duty steel plate, ribbed design to provided extra strength, light weight and sturdy. Equipped with cross bar for stability.
- Includes bubble level and adjustable back support.
- Quick and easy installation, all necessary hardware included.
- Use for supporting condensing units.

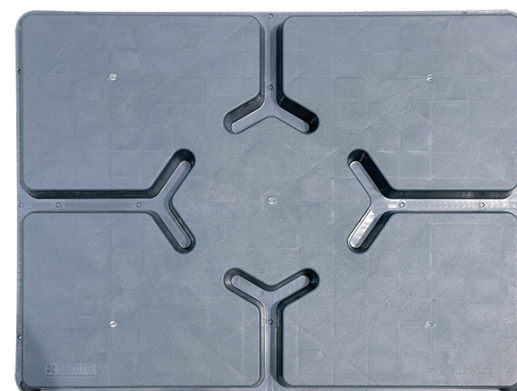
Item No.	Specifications	U/M	Std. Pkg.
18024	31" x 15" x 17-3/4" Bracket (2 HP)	PR	6
18025	31-1/2" x 15" x 21-1/2" Bracket (3 HP)	PR	6



## E-Z STACK PAD

- The excellent one-piece structure design makes the bottom surface have more contact with the ground, making the product not easy to sink.
- Sturdy stiffener rib design enables the product to have better load-bearing performance.
- Nestable design reduces storage space and transportation costs.
- The special texture on the surface makes the product have a non-slip effect.
- Hole-free design prevents the equipment from operating normally due to weeds growing upwards.

Item No.	Specifications	U/M	Std. Pkg.
18050S	18" x 38" x 3" E-Z Stack Equipment Pad, Gray	EA	90
18050SP	18" x 38" x 3" E-Z Stack Equipment Pad, Gray, 90/PK	PK	1
18050BS	18" x 38" x 3" E-Z Stack Equipment Pad, Black	EA	90
18050BSP	18" x 38" x 3" E-Z Stack Equipment Pad, Black, 90/PK	PK	1
18052S	24" x 36" x 3" E-Z Stack Equipment Pad, Gray	EA	76
18052SP	24" x 36" x 3" E-Z Stack Equipment Pad, Gray, 76/PK	PK	1
18052BS	24" x 36" x 3" E-Z Stack Equipment Pad, Black	EA	76
18052BSP	24" x 36" x 3" E-Z Stack Equipment Pad, Black, 76/PK	PK	1
18070S	24" x 48" x 3" E-Z Stack Equipment Pad, Gray	EA	50
18070SP	24" x 48" x 3" E-Z Stack Equipment Pad, Gray, 50/PK	PK	1
18070BS	24" x 48" x 3" E-Z Stack Equipment Pad, Black	EA	50
18070BSP	24" x 48" x 3" E-Z Stack Equipment Pad, Black, 50/PK	PK	1
18072S	36" x 48" x 3" E-Z Stack Equipment Pad, Gray	EA	38
18072SP	36" x 48" x 3" E-Z Stack Equipment Pad, Gray, 38/PK	PK	1
18072BS	36" x 48" x 3" E-Z Stack Equipment Pad, Black	EA	38
18072BSP	36" x 48" x 3" E-Z Stack Equipment Pad, Black, 38/PK	PK	1
18074S	30" x 40" x 3" E-Z Stack Equipment Pad, Gray	EA	46
18074SP	30" x 40" x 3" E-Z Stack Equipment Pad, Gray, 46/PK	PK	1
18074BS	30" x 40" x 3" E-Z Stack Equipment Pad, Black	EA	46
18074BSP	30" x 40" x 3" E-Z Stack Equipment Pad, Black, 46/PK	PK	1

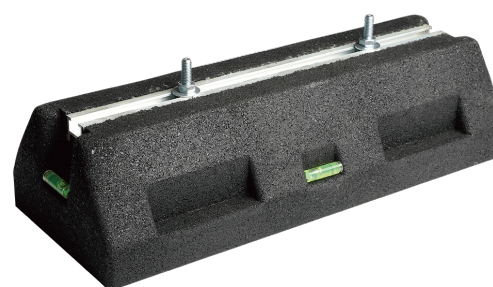


US PATENT

## REGULAR DUTY EQUIPMENT MOUNTING HEFTY BLOCK

- Made from durable, weather-resistant recycled rubber.
- Provides effective vibration dampening and stable support for equipment.
- Models 19050-19053 are standard-duty supports for mini-split systems.
- Models 19060-19063 are heavy-duty supports for piping, cable trays, electrical conduits, and HVAC systems.

Item No.	Specifications	U/M	Std. Pkg.
19050	H3.75" x W6.25" x L10" Rubber Risers	EA	4
19051	H3.75" x W6.25" x L15.75" Rubber Risers	EA	2
19052	H3.75" x W6.25" x L23.625" Rubber Risers	EA	2
19053	H3.75" x W6.25" x L39.37" Rubber Risers	EA	2



## HEAVY DUTY EQUIPMENT MOUNTING HEFTY BLOCK

Item No.	Specifications	U/M	Std. Pkg.
19060	H3.75" x W6.25" x L10" Rubber Risers	EA	4
19061	H3.75" x W6.25" x L15.75" Rubber Risers	EA	2
19062	H3.75" x W6.25" x L23.625" Rubber Risers	EA	2
19063	H3.75" x W6.25" x L39.37" Rubber Risers	EA	2

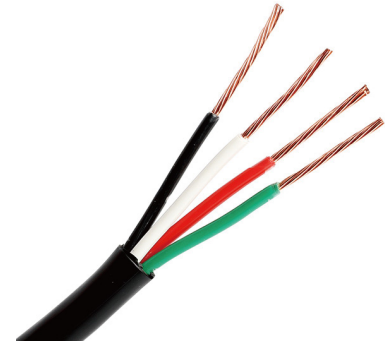




## MINI SPLIT CABLE UL THHN

- Suitable for all ductless mini split air conditioners and heat pump systems requiring 4-conductor control cable.
- UL Listed, contractor-grade, with a color-coded, stranded, black exterior jacket.
- Suitable for both indoor and outdoor environments, including wet locations.
- Features water, chemical, and UV-resistant.
- Capable of withstanding temperatures up to 194°F.

Item No.	Specifications	U/M	Std. Pkg.
41580	14-4 Mini Split Cable UL THHN, 50FT	RL	5
41581	14-4 Mini Split Cable UL THHN, 250FT	RL	1



## N/M FITTINGS CONDUIT WHIPS

- UL Listed.
- Cable consists of insulated conductors inserted into a non-metallic conduit with PVC connectors.
- Be designed for reliable use as a connection between air conditioning unit and electrical power source.
- UL and cUL Listed. The seal proof power whip assembly is assembled with all UL components designed for easy installation.
- Three distinct wire colors for ease of hook-up.

Item No.	Specifications	U/M	Std. Pkg.
15801	1/2" x 4' 10GA N/M Fittings Conduit Whip	EA	24
15802	1/2" x 6' 10GA N/M Fittings Conduit Whip	EA	24
15803	3/4" x 4' 8GA w/Ground N/M Fittings Conduit Whip	EA	24
15804	3/4" x 6' 8GA w/Ground N/M Fittings Conduit Whip	EA	12



## M FITTINGS CONDUIT WHIPS

- UL Listed.
- Cable consists of insulated conductors inserted into a non-metallic conduit with zinc alloy connectors.
- Be designed for reliable use as a connection between air conditioning unit and electrical power source.
- Whip is a labor-saving and convenient tool kit for A / C unit connection.
- Three distinct wire colors for ease of hook-up.

Item No.	Specifications	U/M	Std. Pkg.
15805	1/2" x 4' 10GA M Fittings Conduit Whip	EA	24
15806	1/2" x 6' 10GA M Fittings Conduit Whip	EA	24
15807	3/4" x 4' 8GA w/Ground M Fittings Conduit Whip	EA	24
15808	3/4" x 6' 8GA w/Ground M Fittings Conduit Whip	EA	12



## METAL DISCONNECT SWITCHES

- Fusible and non-fusible combination wall-mounted power sockets can be easily and safely disconnected from the power supply as required.
- The clearly visible ON / OFF label eliminates guesswork and provides a clean, modern look.
- UL listed, NEMA type 3R enclosure for outdoor use.
- Efficient and space-saving enclosure with unobstructed wiring troughs and easy removal of the lid and interior.
- Knockouts on back, bottom and sides offer a variety of configurations.
- The pull-out handle can store the "OFF" position in the compartment, helping to prevent the handle from being misplaced.
- Protective shield cannot be removed until the pullout handle is removed, disconnecting the power.

Item No.	Specifications	U/M	Std. Pkg.
15539	60A Non-Fused Metallic Disconnect	EA	6
15539P	60A Non-Fused Metallic Disconnect, 576/PK	PK	1
15540	30A Fused Metallic Disconnect	EA	6
15540P	30A Fused Metallic Disconnect, 576/PK	PK	1
15541	60A Fused Metallic Disconnect	EA	6
15541P	60A Fused Metallic Disconnect, 576/PK	PK	1



## PANCAKE COIL

- Copper refrigerator tube has the features of high temperature resistance, corrosion resistance, oxidation resistance, durability, long service life.
- Having strong heat transfer capability because the copper tubes are hollow.
- Good heat dissipation and refrigeration capability, high strength at low temperature.
- High dimensional accuracy. Smooth bending allows copper tubes to bend at any angle.
- Refrigerator tubing is not only used for refrigerator, freezer and air conditioner as refrigeration tubing coil, but also used as a HVAC system pipe.

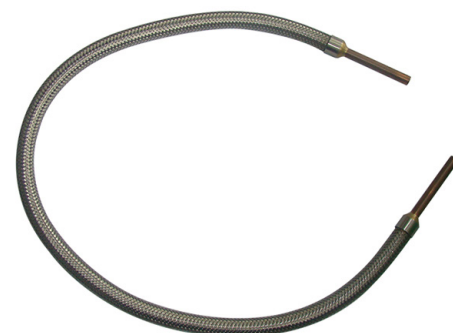
Item No.	Specifications	U/M	Std. Pkg.
90001	1/4" O.D x 50' Copper Pancake Coil	EA	1
90002	5/16" O.D x 50' Copper Pancake Coil	EA	1
90003	3/8" O.D x 50' Copper Pancake Coil	EA	1
90004	1/2" O.D x 50' Copper Pancake Coil	EA	1
90005	5/8" O.D x 50' Copper Pancake Coil	EA	1
90006	3/4" O.D x 50' Copper Pancake Coil	EA	1
90007	7/8" O.D x 50' Copper Pancake Coil	EA	1



## MINI SPLIT FLEXIBLE REFRIGERATE LINE

- Prevents refrigerant line from kinking.
- Easy installation, saving time and labor costs.
- Each line has a 3" long copper end for easier flaring.

Item No.	Specifications	U/M	Std. Pkg.
90031	1/4" O.D x 36" Mini Split Flex Line	EA	1
90032	3/8" O.D x 36" Mini Split Flex Line	EA	1
90033	1/2" O.D x 36" Mini Split Flex Line	EA	1
90034	5/8" O.D x 36" Mini Split Flex Line	EA	1
90035	3/4" O.D x 36" Mini Split Flex Line	EA	1
90036	7/8" O.D x 36" Mini Split Flex Line	EA	1
90041	1/4" O.D x 72" Mini Split Flex Line	EA	1
90042	3/8" O.D x 72" Mini Split Flex Line	EA	1
90043	1/2" O.D x 72" Mini Split Flex Line	EA	1
90044	5/8" O.D x 72" Mini Split Flex Line	EA	1



## ACCESS ADAPTERS

- Perfect for R410a import mini split system air conditioners.
- Durable.

Item No.	Specifications	U/M	Std. Pkg.
91101	1/4" Female Flare Swivel w/Depressor Tip & Seal x 1/4" Mpt	EA	1
91102	1/4" Male Flare x 1/2" Female Unf	EA	1



## MINI SPLIT CONDENSER DRAIN HOSE

- Features dual-sized ends and connection sockets every 20" for flexible installation.
- Efficiently channels condensate from air conditioners, ensuring reliable drainage and performance.
- Made from high-quality PE with a carbon black inner layer for UV and corrosion resistance.
- Suitable for both indoor and outdoor use thanks to its durability and flexibility.
- Compatible with most mini split AC and heat pump systems, and easily cut or connected as needed.

Item No.	Specifications	U/M	Std. Pkg.
33501	1/2" x 164' Condensate Drain Hose, UV Resistant	RL	1
33502	5/8" x 164' Condensate Drain Hose, UV Resistant	RL	1
33503	5/8" x 20' Condensate Drain Hose, UV Resistant	RL	1



## SMOOTH BORE DRAIN HOSE

- Built with high-quality, ivory-colored PVC for exceptional durability.
- Smooth interior reduces sludge build-up and minimizes maintenance.
- Easily cut to the desired length for tailored installations.
- Prevents secondary condensation, keeping the system dry and efficient.
- Simple plug-in design allows quick, hassle-free setup with your air conditioner.

Item No.	Specifications	U/M	Std. Pkg.
33505	5/8" x 65' Smooth Bore Drain Hose	RL	1



## INSULATED DRAIN HOSE

- Insulated design Protects hose from sweating that can occur from cooler condensate and warmer ambient air.
- Provide flexibility, kink-resistance, and resilience in extreme temperatures.
- No need to cut and cement plastic pipes for the drain assembly.
- A universal fit supports quick and easy installation with most AC units and drain systems.
- Fire resistant, recommended for indoor use.

Item No.	Specifications	U/M	Std. Pkg.
33511	1/2" x 65' Insulated Drain Hose	RL	1
33512	3/4" x 65' Insulated Drain Hose	RL	1
33513	1" x 65' Insulated Drain Hose	RL	1



## LINESET COVER KIT

- Durable PVC construction with paintable white components for seamless blending.
- Easy to install in new or existing setups.
- Protects up to 18'.



Item No.	Specifications	U/M	Std. Pkg.
18481W	3" Lineset Cover 16 ft Kit, White	KT	1
18482W	4" Lineset Cover 16 ft Kit, White	KT	1

### 18481W Including

Item No.	Specifications	U/M	Qty
18401W	3" x 4' Lineset Cover, White	EA	4
18405W	3" 90° Flat Elbow, White	EA	1
18414W	3" 90° Vertical Elbow, White	EA	1
18420W	3" Coupler, White	EA	3
18425W	3" Wall Inlet, White	EA	1
18434W	3" End Fitting, White	EA	1
18443W	3" Flex Channel, White	EA	1

### 18482W Including

Item No.	Specifications	U/M	Qty
18402W	4" x 4' Lineset Cover, White	EA	4
18406W	4" 90° Flat Elbow, White	EA	1
18415W	4" 90° Vertical Elbow, White	EA	1
18421W	4" Coupler, White	EA	3
18426W	4" Wall Inlet, White	EA	1
18435W	4" End Fitting, White	EA	1
18444W	4" Flex Channel, White	EA	1

\* Parts available separately—visit [www.dakotasourcing.com](http://www.dakotasourcing.com) for details.

## SILICONE SEALANT

- Low odor.
- Excellent waterproof seal, providing a reliable seal in areas prone to consistent water exposure.
- Will not discolor most high-end metal finishes like chrome, bronze and nickel.
- Insulates thermally and electrically.
- Excellent flexibility & strong adhesion, provides a flexible, durable seal for both exterior and interior projects.

Item No.	Specifications	U/M	Std. Pkg.
15201	Silicone Sealant, 10.1 oz Clear	EA	12
15201P	Silicone Sealant, 10.1 oz Clear, 600/PK	PK	1
15202	Silicone Sealant, 10.1 oz White	EA	12
15202P	Silicone Sealant, 10.1 oz White, 600/PK	PK	1
15203	Silicone Sealant, 10.1 oz Aluminum	EA	12
15203P	Silicone Sealant, 10.1 oz Aluminum, 600/PK	PK	1
15204	Hi-Temp Silicone Sealant, 10.1 oz. Red	EA	12
15204P	Hi-Temp Silicone Sealant, 10.1 oz. Red, 600/PK	PK	1



15201

15202

15203

15204

## CAULKING GUNS

- All metal or plastic construction.
- Smooth and strong pressure.
- Comfortable pistol grip puncture wire and tip cutter included.

Item No.	Specifications	U/M	Std. Pkg.
36119	Caulking Gun Economy 1/10 Gallon	EA	40
36120	Nylon Caulk Gun	EA	18



36119

36120



## REFRIGERANT LOCKING CAPS

- Meets the IMC and IRC codes requirement.
- Weather Proof, anodized aluminum casing with threaded brass insert.
- Universal Key Available, fits refrigerant locking caps from all major manufacturers.
- Deters Refrigerant Theft - tamper resistant cap design. Special tools are required to apply or remove caps.
- Refrigerant locking caps are embossed and color-coded. Proper installation safeguards against accidental mixing of refrigerant gases in A/C systems.

### For R-410

Item No.	Specifications	U/M	Std. Pkg.
91602-2	1/4" Refrigerant Locking Cap, Red for R-410, 2/PK	PK	1
91602-10	1/4" Refrigerant Locking Cap, Red for R-410, 10/PK	PK	1
91602-12	1/4" Refrigerant Locking Cap, Red for R-410, 12/PK	PK	1
91602-6K	1/4" Refrigerant Locking Cap w/Key, Red for R-410, 6/PK	PK	1
91602-50K	1/4" Refrigerant Locking Cap w/Keys, Red for R-410, 50/PK	PK	1
91602-500	1/4" Refrigerant Locking Cap, Red for R-410, 500/PK	PK	1



### For Universal (A2L Compatible)

Item No.	Specifications	U/M	Std. Pkg.
91604-2	1/4" Refrigerant Locking Cap, Universal Silver, 2/PK	PK	1
91604-10	1/4" Refrigerant Locking Cap, Universal Silver, 10/PK	PK	1
91604-12	1/4" Refrigerant Locking Cap, Universal Silver, 12/PK	PK	1
91604-6K	1/4" Refrigerant Locking Cap w/Key, Universal Silver, 6/PK	PK	1
91604-50K	1/4" Refrigerant Locking Cap w/Keys, Universal Silver, 50/PK	PK	1
91604-500	1/4" Refrigerant Locking Cap, Universal Silver, 500/PK	PK	1



## KEY FOR REFRIGERANT SAFETY CAPS

Item No.	Specifications	U/M	Std. Pkg.
91605	Universal Key for Refrigerant Locking Cap	EA	1



## PIPE CUTTERS

- Excellent for cutting tubing insulation.
- Strong aluminum alloy handle.
- Made from durable, high-quality aluminum alloy material, and designed for a long service life.
- Easy and safe to store with locking mechanism.
- Works great with all tubing sizes up to and over 1 inch.

Item No.	Specifications	U/M	Std. Pkg.
36101	Junior Pipe & Hose Cutter	EA	1
36102	2 Sets Pipe Cutter Replacement Blades	PK	1
36103	Big Pipe Cutter	EA	1



## WIRE STRIPPERS

- Ideal for copper and aluminum cables from 10-22 AWG. Built in wire cutter.
- Simple operation. Simple one-handed motion grabs, holds, pulls and removes outer jacket makes clean cuts on wires.
- Comfortable hand feeling, ergonomically design and optimal force-transmission.
- Easy twisting and pulling provided by the serrated nose that holds cable with out slipping.
- Spring loaded for self-opening action.

Item No.	Specifications	U/M	Std. Pkg.
36107	Wire Strippers-Cutter	EA	1





## CONDENSATE

- Silent and soft start.
- Accurate and reliable water detection.
- Speed selective.
- Convenient cleaning.
- ETL certified.

### Z20 MINI-SPLIT CONDENSATE PUMP

Item No.	Specifications	U/M	Std. Pkg.
18101	Z20 Mini-Split Pump, Industrial Sensor, Dual Vol, 5.3 GPH	EA	1



### Z40 MINI-SPLIT CONDENSATE PUMP

Item No.	Specifications	U/M	Std. Pkg.
18102	Z40 Mini-Split Pump, Industrial Sensor, Dual Vol, 10.6 GPH	EA	1



### Z40H MINI-SPLIT CONDENSATE PUMP

Item No.	Specifications	U/M	Std. Pkg.
18103	Z40H Mini-Split Pump, Industrial Sensor, Dual Vol, 10.6 GPH	EA	1



### X15 MINI-SPLIT CONDENSATE PUMP

- Ultra Silent.
- Easy Assembly.

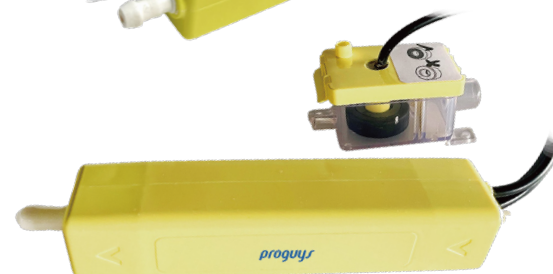
Item No.	Specifications	U/M	Std. Pkg.
18121	X15 Mini-Split Pump, Dual Vol, 3.9 GPH	EA	1



### X40 MINI-SPLIT CONDENSATE PUMP

- Ultra Silent.
- Easy Assembly.

Item No.	Specifications	U/M	Std. Pkg.
18122	X40 Mini-Split Pump, Dual Vol, 10.6 GPH	EA	1



### X40H MINI-SPLIT CONDENSATE PUMP

- Ultra Silent.
- Easy Assembly.

Item No.	Specifications	U/M	Std. Pkg.
18123	X40H Mini-Split Pump, Dual Vol, 10.6 GPH	EA	1





### **Dakota Sourcing, LLC**

SD Distribution Center

Address: 601 N. 16th St, Beresford, SD 57004

Phone: 605-763-4900

LA Distribution Center

Address: 766 S Ayon Ave Unit C, Azusa, CA 91702

Phone: 626-836-1212

[www.dakotasourcing.com](http://www.dakotasourcing.com)

[sales@dakotasourcing.com](mailto:sales@dakotasourcing.com)