

# A/C SURGE PROTECTOR

Protect HVAC Equipment  
from Voltage Spikes and  
Transient Surges



**COMING  
SOON**



**Enhanced**  
Equipment Protection



**Built for**  
Outdoor HVAC Use



**Fast**  
Contractor-Friendly  
Installation



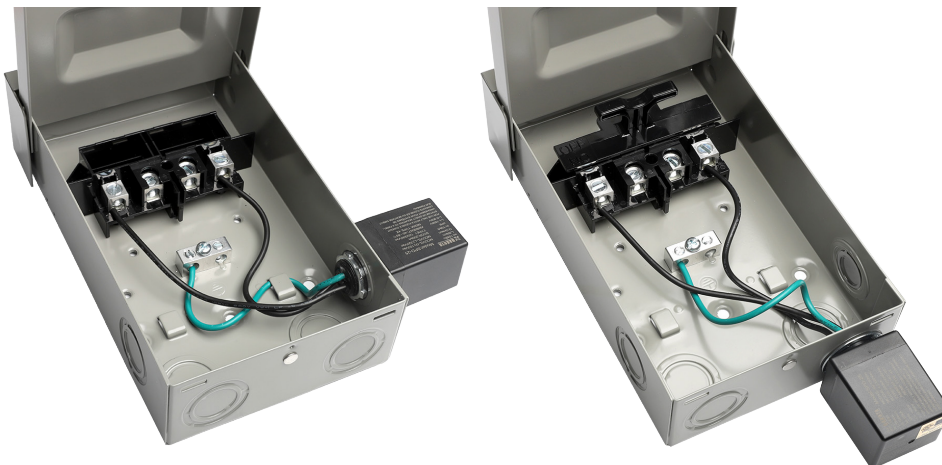
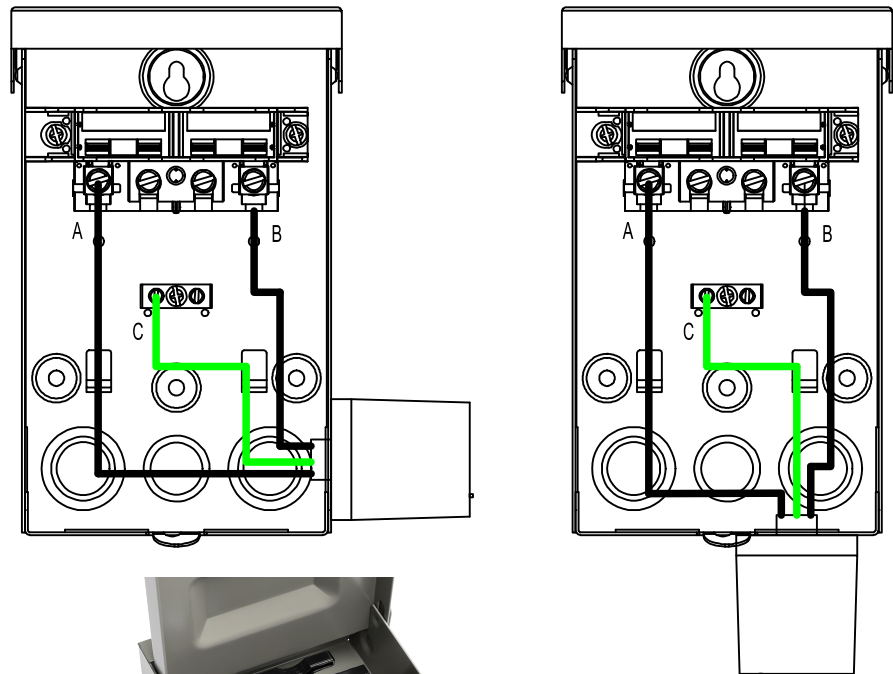
## Installation

1. Verify the circuit voltage and confirm that the correct surge protector model is being installed.
2. Turn off power to the circuit where the surge protector is to be installed.
3. Mount the device as close to the circuit connection point as practical. Keep conductor lengths as short and straight as possible.
4. Cut conductors to the required length and connect according to the wiring diagram below. Avoid sharp bends or loops.

## Typical Wiring Diagram

For reference only.

A=Brack(Load)  
B=Brack(Load)  
C=Green(Ground)



## RELATED PRODUCTS

### Metal Disconnect Switch

- Safe Power Disconnect
- Clear ON/OFF Indicator
- cULus Listed / NEMA 3R Outdoor Enclosure
- Multiple Knockout Locations
- Protective Safety Shield



Item No. **15539-15541**

### N/M Fittings Conduit Whips

- UL Listed Power Whip
- Non-Metallic Fittings
- Straight & 90° Connectors
- Weather-Resistant Design
- Color-Coded Wires



Item No. **15801-15804**

### M Fittings Conduit Whips

- UL Listed Power Whip
- Metal Fittings
- Straight & 90° Connectors
- Corrosion / Oil / Water / Sunlight Resistant
- Color-Coded Wires



Item No. **15805-15808**